



## ■ Production

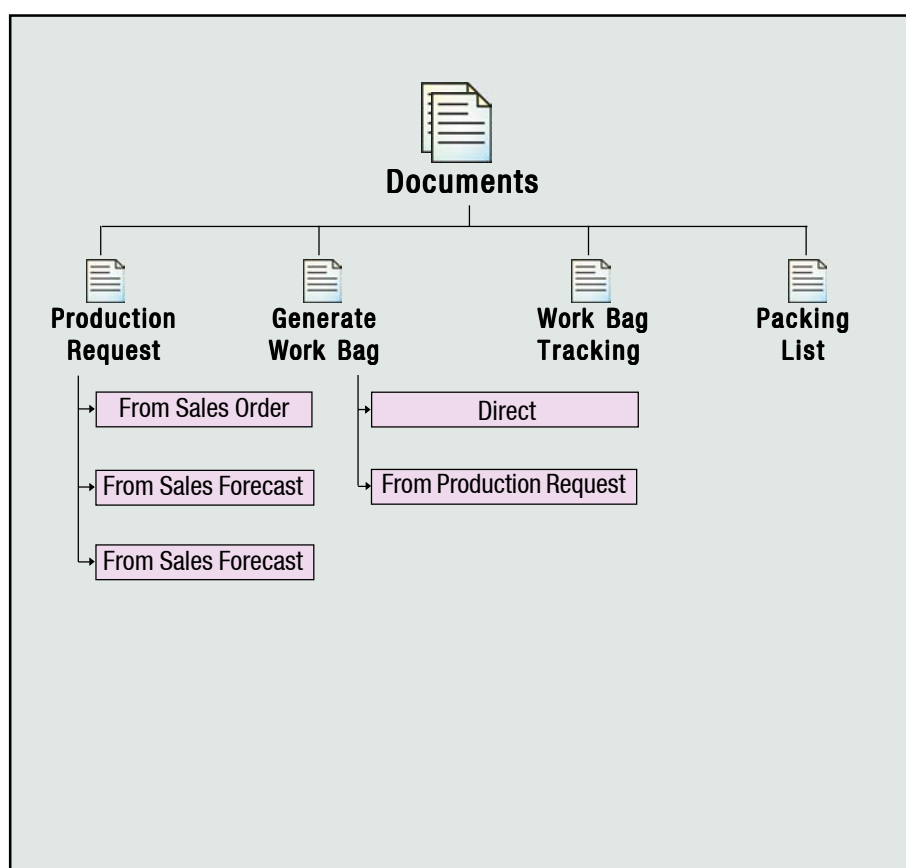
### ■ Diaspark Jewel 3.0

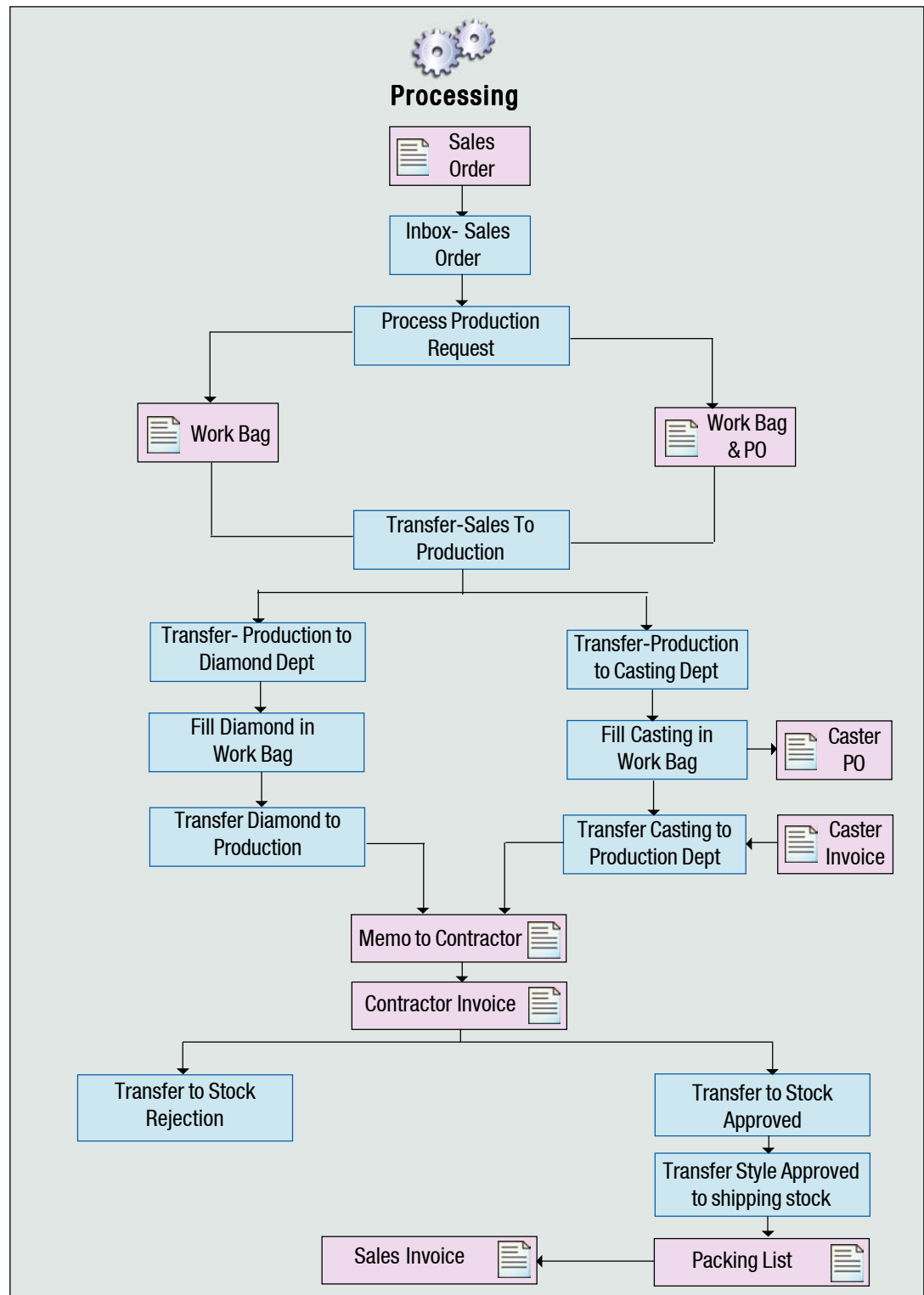
#### ■ HIGHLIGHTS

- Production Request can be generated from Sales Order, Inventory, Sales Forecast or direct.
- Style master defines whether style is to be produced in-house or it is to be bought. If style is to be produced in-house then workbag is prepared automatically. If style is to be purchased from outside, then PO is generated.
- Workbag tracking is done at different production stages. Production stages can also be customized.
- Workbag tracking can be done by style #, customer #, ship date, SO #, etc.
- Workbags are bar-coded for easy tracking.
- The Work-in-Process (WIP) tracking can be done using styles, workbag #, SO #.
- Packing list is generated automatically from the workbag.

#### ■ REPORTS

- Customer Shipping Checklist
- Work Bag List
- Open Production Report
- Open Diamond Requirement
- Shipping Packing Log
- Work Bag Status Report





- ▣ Accounts Receivable ▣ Accounts Payable ▣ Cash Manager ▣ General Ledger
- ▣ Sales Orders and Invoicing ▣ Purchase Orders and Invoicing ▣ Contractor
- ▣ Return and Repairs ▣ System Manager ▣ Gold ▣ Diamond and Color Stone Inventory
- ▣ Style and Casting Inventory ▣ Style Setup ▣ **Production** ▣ Imaging and Catalog ▣ EDI